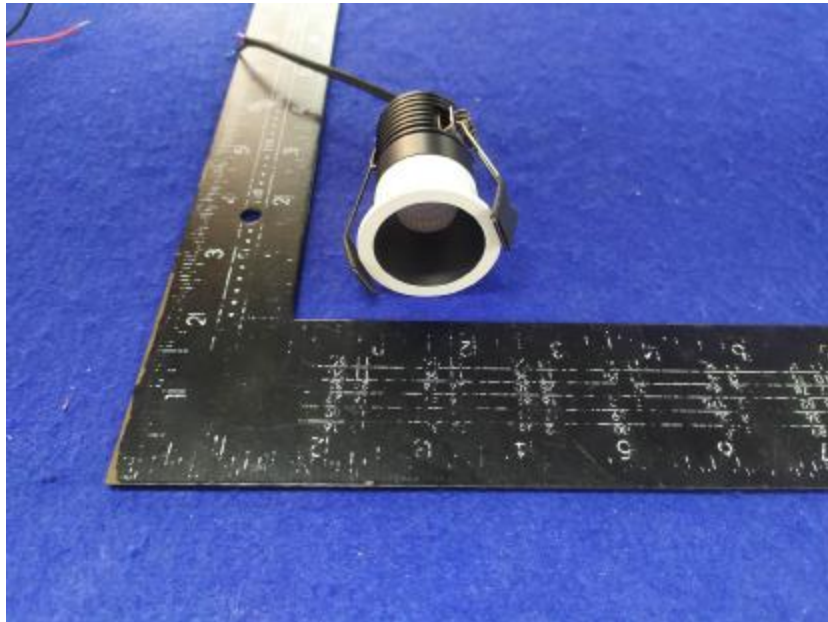


Luminaire Photograph



Light Output Ratio:	70.9%	
Luminaire Power:	3.016 W	
SHR Nominal:	0.50	Calculated using the TM5
SHR Maximum:	0.55	fine grid method.

C Range: 0 - 360DEG
C Interval: 30.0DEG
Test Speed: HIGH
Temperature: 25.3DEG
Operators: Zoe
Test Date: 2020-06-04

g Range: 0 - 180DEG
g Interval: 1.0DEG
Test System: EVERFINE GO-SPEX500_V1 SYSTEM V2.00.416
Humidity: 65.0%
Test Distance: 3.160m [K=1.0000]
Remarks: LAMP: CXB1512-0000-000430G Ra: 90
REFLECTOR: AA-022A-M 24R
NOT DRIVER: 9V 350mA
30minutes warm-up

LUMINOUS INTENSITY DISTRIBUTION DIAGRAM

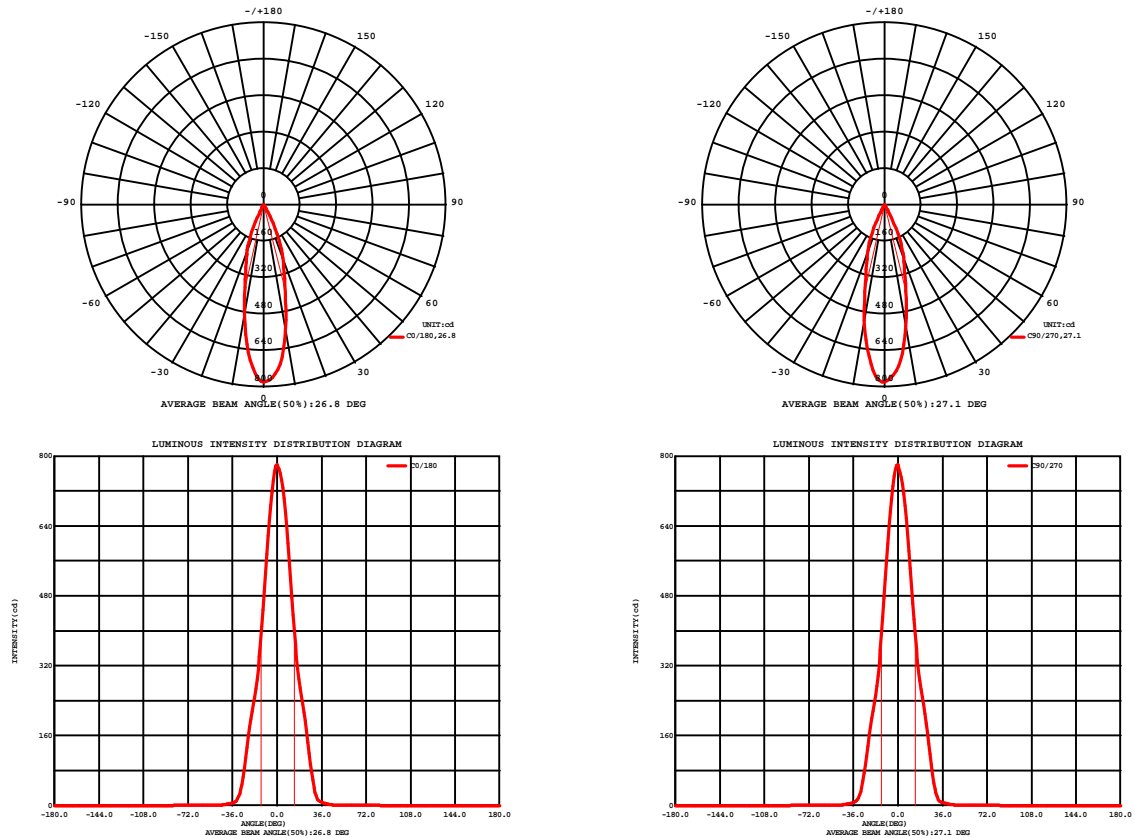


Fig. C0/C180

Fig. C90/C270

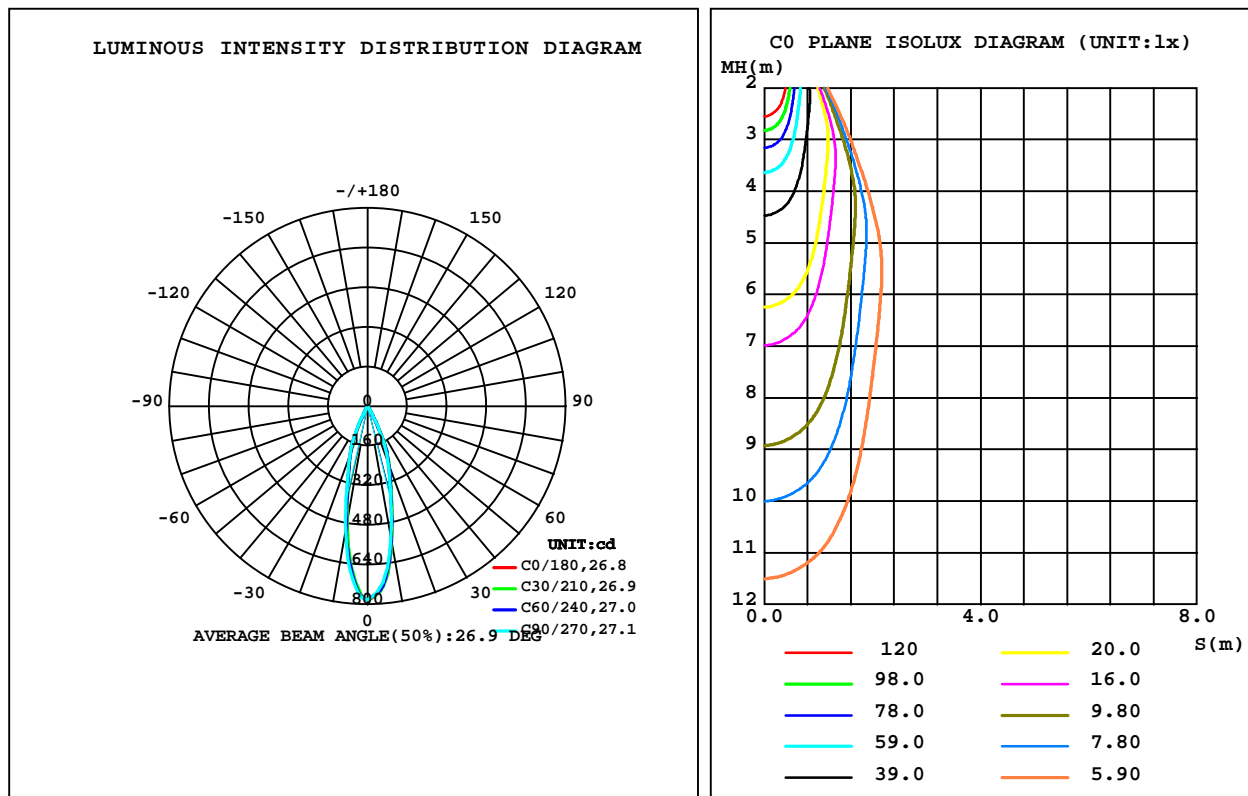
C Range: 0 - 360DEG
C Interval: 30.0DEG
Test Speed: HIGH
Temperature: 25.3DEG
Operators: Zoe
Test Date: 2020-06-04

Range: 0 - 180DEG
Interval: 1.0DEG
Test System: EVERFINE GO-SPEX500_V1 SYSTEM V2.00.416
Humidity: 65.0%
Test Distance: 3.160m [K=1.0000]
Remarks: LAMP: CXB1512-0000-000430G Ra: 90
REFLECTOR: AA-022A-M 24R
NOT DRIVER: 9V 350mA
30minutes warm-up

LUMINAIRE PHOTOMETRIC TEST REPORT

Test:U:8.6161V I:0.3500A P:3.0156W PF:1.0000 Freq:49.99Hz Lamp Flux:315.32x1 lm		
NAME: 2018.132	TYPE:	WEIGHT:
SPEC.:3000K	DIM.:	SERIAL No.:2006040203
MFR.: RISE	SUR.:0.000754385m2	Shielding Angle:

DATA OF LAMP		PHOTOMETRIC DATA Eff: 74.18 lm/W			
MODEL	CREE	I _{max} (cd)	780.5	S/MH(C0/180)	0.42
NOMINAL POWER(W)	3	LOR(%)	70.9	S/MH(C90/270)	0.44
RATED VOLTAGE(V)	9	TOTAL FLUX(lm)	223.71	h UP,DN(C0-180)	0.0,37.0
NOMINAL FLUX(lm)	315.32	CIE CLASS	DIRECT	h UP,DN(C180-360)	0.0,34.0
LAMPS INSIDE	1	h up(%)	0.0	CIBSE SHR NOM	0.50
TEST VOLTAGE(V)	9	h down(%)	70.9	CIBSE SHR MAX	0.55



C Range: 0 - 360DEG
C Interval: 30.0DEG
Test Speed: HIGH
Temperature:25.3DEG
Operators:Zoe
Test Date:2020-06-04

g Range: 0 - 180DEG
Interval: 1.0DEG
Test System:EVERFINE GO-SPEX500_V1 SYSTEM V2.00.416
Humidity:65.0%
Test Distance:3.160m [K=1.0000]
Remarks: LAMP:CXB1512-0000-000430G Ra:90
REFLECTOR:AA-022A-M 24R
NOT DRIVER:9V 350mA
30minutes warm-up

ZONAL FLUX DIAGRAM

ZONAL FLUX DIAGRAM:

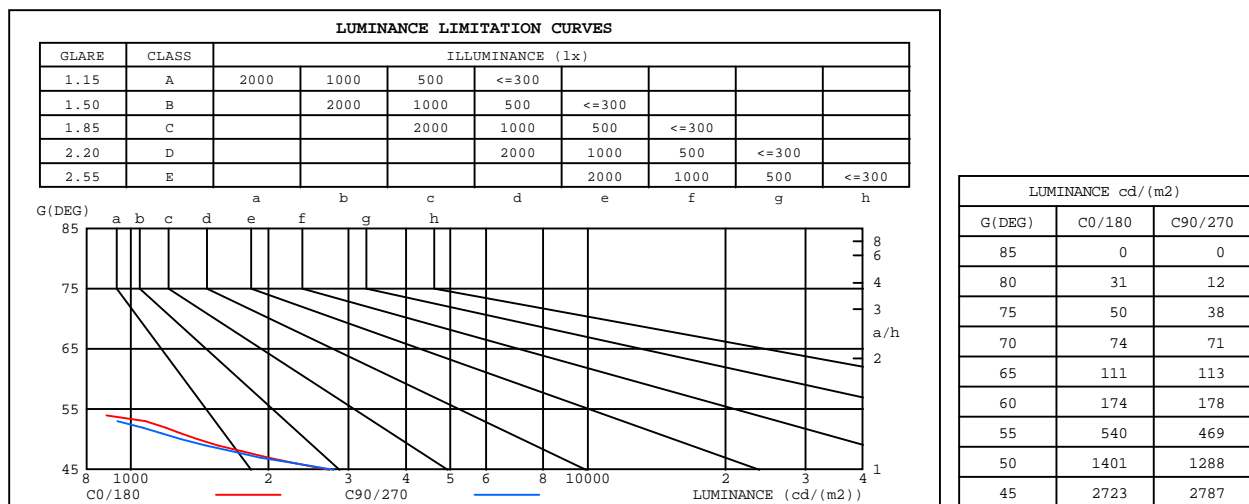
g	C0	C45	C90	C135	C180	C225	C270	C315	g	F zone	F total	%lum, lamp
10	559.0	559.0	543.4	513.3	489.7	492.5	517.7	548.9	0- 10	61.77	61.77	27.6,19.6
20	250.1	256.2	247.9	231.0	214.3	207.6	216.6	240.9	10- 20	96.52	158.3	70.8,50.2
30	40.52	43.34	36.95	30.94	27.56	27.64	30.84	36.99	20- 30	57.02	215.3	96.2,68.3
40	3.764	3.956	4.015	3.462	2.936	2.996	3.461	3.594	30- 40	6.856	222.2	99.3,70.5
50	0.6782	0.6312	0.6247	0.6932	0.7110	0.7098	0.7140	0.7146	40- 50	1.235	223.4	99.9,70.9
60	0.0656	0.0662	0.0671	0.0707	0.0696	0.0704	0.0721	0.0693	50- 60	0.2547	223.7	100,70.9
70	0.0190	0.0176	0.0184	0.0207	0.0227	0.0232	0.0206	0.0200	60- 70	0.0397	223.7	100,70.9
80	0.0041	0.0009	0.0015	0.0033	0.0019	0.0037	0.0031	0.0011	70- 80	0.0104	223.7	100,70.9
90	0	0	0	0	0	0	0	0	80- 90	0.0005	223.7	100,70.9
100	0	0	0	0	0	0	0	0	90-100	0	223.7	100,70.9
110	0	0	0	0	0	0	0	0	100-110	0	223.7	100,70.9
120	0	0	0	0	0	0	0	0	110-120	0	223.7	100,70.9
130	0	0	0	0	0	0	0	0	120-130	0	223.7	100,70.9
140	0	0	0	0	0	0	0	0	130-140	0	223.7	100,70.9
150	0	0	0	0	0	0	0	0	140-150	0	223.7	100,70.9
160	0	0	0	0	0	0	0	0	150-160	0	223.7	100,70.9
170	0	0	0	0	0	0	0	0	160-170	0	223.7	100,70.9
180	0	0	0	0	0	0	0	0	170-180	0	223.7	100,70.9
DEG	LUMINOUS INTENSITY:cd									UNIT:lm		

C Range: 0 - 360DEG
C Interval: 30.0DEG
Test Speed: HIGH
Temperature:25.3DEG
Operators:Zoe
Test Date:2020-06-04

g Range: 0 - 180DEG
Interval: 1.0DEG
Test System:EVERFINE GO-SPEX500_V1 SYSTEM V2.00.416
Humidity:65.0%
Test Distance:3.160m [K=1.0000]
Remarks: LAMP:CXB1512-0000-000430G Ra:90
REFLECTOR:AA-022A-M 24R
NOT DRIVER:9V 350mA
30minutes warm-up

LUMINANCE LIMITATION CURVES

Test:U:8.6161V I:0.3500A P:3.0156W PF:1.0000 Freq:49.99Hz Lamp Flux:315.32x1 lm		
NAME: 2018.132	TYPE:	WEIGHT:
SPEC.:3000K	DIM.:	SERIAL No.:2006040203
MFR.: RISE	SUR.:0.000754385m2	Shielding Angle:



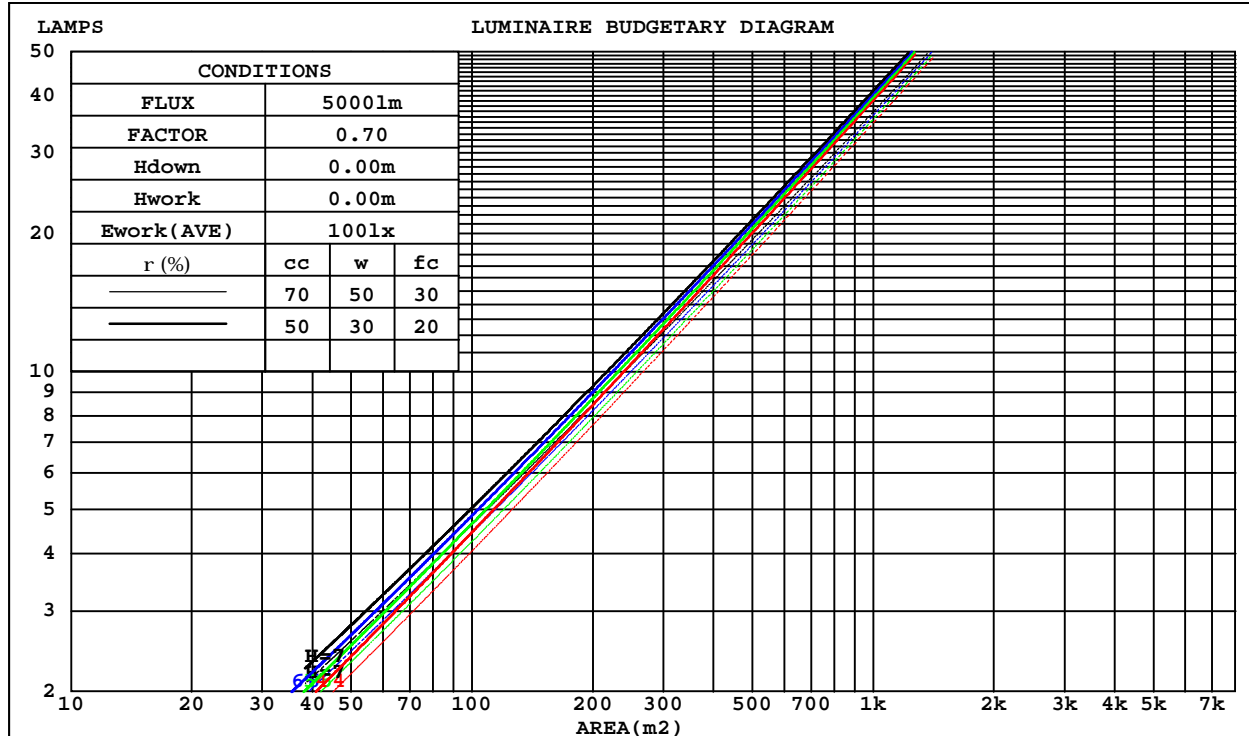
C Range: 0 - 360DEG
C Interval: 30.0DEG
Test Speed: HIGH
Temperature:25.3DEG
Operators:Zoe
Test Date:2020-06-04

G Range: 0 - 180DEG
G Interval: 1.0DEG
Test System:EVERFINE GO-SPEX500_V1 SYSTEM V2.00.416
Humidity:65.0%
Test Distance:3.160m [K=1.0000]
Remarks: LAMP:CXB1512-0000-000430G Ra:90
REFLECTOR:AA-022A-M 24R
NOT DRIVER:9V 350mA
30minutes warm-up

CU AND LUMINAIRE BUDGETARY ESTIMATE DIAGRAM

Test:U:8.6161V I:0.3500A P:3.0156W PF:1.0000 Freq:49.99Hz Lamp Flux:315.32x1 lm		
NAME: 2018.132	TYPE:	WEIGHT:
SPEC.:3000K	DIM.:	SERIAL No.:2006040203
MFR.: RISE	SUR.:0.000754385m2	Shielding Angle:

rcc	80%			70%			50%			30%			10%			0
rw	50%	30%	10%	50%	30%	10%	50%	30%	10%	50%	30%	10%	50%	30%	10%	0
r fc	20%			20%			20%			20%			20%			0
RCR	RCR:Room Cavity Ratio Coefficients of Utilization(CU)															
0.0	.84	.84	.84	.82	.82	.82	.79	.79	.79	.75	.75	.75	.72	.72	.72	.71
1.0	.80	.78	.77	.78	.77	.76	.76	.75	.74	.73	.72	.71	.71	.70	.69	.68
2.0	.76	.74	.72	.75	.73	.71	.72	.71	.69	.70	.69	.68	.69	.68	.67	.66
3.0	.72	.70	.68	.71	.69	.67	.70	.68	.66	.68	.66	.65	.67	.65	.64	.63
4.0	.69	.66	.64	.68	.66	.64	.67	.65	.63	.66	.64	.62	.65	.63	.62	.61
5.0	.66	.63	.61	.66	.63	.61	.65	.62	.60	.64	.61	.60	.63	.61	.59	.58
6.0	.64	.61	.58	.63	.60	.58	.62	.60	.58	.61	.59	.57	.61	.59	.57	.56
7.0	.61	.58	.56	.61	.58	.56	.60	.58	.56	.59	.57	.55	.59	.57	.55	.54
8.0	.59	.56	.54	.59	.56	.54	.58	.56	.54	.58	.55	.53	.57	.55	.53	.53
9.0	.57	.54	.52	.57	.54	.52	.56	.54	.52	.56	.53	.52	.55	.53	.52	.51
10.0	.55	.52	.50	.55	.52	.50	.55	.52	.50	.54	.52	.50	.54	.51	.50	.49



C Range: 0 - 360DEG
C Interval: 30.0DEG
Test Speed: HIGH
Temperature:25.3DEG
Operators:Zoe
Test Date:2020-06-04

g Range: 0 - 180DEG
Interval: 1.0DEG
Test System:EVERFINE GO-SPEX500_V1 SYSTEM V2.00.416
Humidity:65.0%
Test Distance:3.160m [K=1.0000]
Remarks: LAMP:CXB1512-0000-000430G Ra:90
REFLECTOR:AA-022A-M 24R
NOT DRIVER:9V 350mA
30minutes warm-up

WEC AND CCEC

Test:U:8.6161V I:0.3500A P:3.0156W PF:1.0000 Freq:49.99Hz Lamp Flux:315.32x1 lm		
NAME: 2018.132	TYPE:	WEIGHT:
SPEC.:3000K	DIM.:	SERIAL No.:2006040203
MFR.: RISE	SUR.:0.000754385m2	Shielding Angle:

rcc	80%			70%			50%			30%			10%			0
rw	50%	30%	10%	50%	30%	10%	50%	30%	10%	50%	30%	10%	50%	30%	10%	0
rfc	20%			20%			20%			20%			20%			0
RCR	RCR:Room Cavity Ratio Wall Exitance Coefficients(WEC)															
0.0																
1.0	.101	.058	.018	.097	.055	.018	.088	.050	.016	.080	.046	.015	.072	.042	.014	
2.0	.094	.052	.016	.091	.050	.015	.083	.046	.014	.077	.043	.013	.070	.040	.013	
3.0	.089	.047	.014	.085	.046	.014	.079	.043	.013	.074	.040	.012	.068	.038	.012	
4.0	.083	.043	.013	.081	.042	.012	.076	.040	.012	.071	.038	.011	.066	.036	.011	
5.0	.079	.040	.012	.077	.039	.011	.072	.038	.011	.068	.036	.011	.064	.034	.010	
6.0	.075	.038	.011	.073	.037	.011	.069	.035	.010	.066	.034	.010	.062	.033	.010	
7.0	.072	.035	.010	.070	.035	.010	.066	.034	.010	.063	.032	.009	.060	.031	.009	
8.0	.068	.033	.009	.067	.033	.009	.064	.032	.009	.061	.031	.009	.059	.030	.009	
9.0	.066	.032	.009	.064	.031	.009	.062	.030	.009	.059	.030	.008	.057	.029	.008	
10.0	.063	.030	.008	.062	.030	.008	.059	.029	.008	.057	.028	.008	.055	.028	.008	

rcc	80%			70%			50%			30%			10%			0
rw	50%	30%	10%	50%	30%	10%	50%	30%	10%	50%	30%	10%	50%	30%	10%	0
rfc	20%			20%			20%			20%			20%			0
RCR	RCR:Room Cavity Ratio Ceiling Cavity Exitance Coefficients(CCEC)															
0.0	.135	.135	.135	.115	.115	.115	.079	.079	.079	.045	.045	.045	.014	.014	.014	
1.0	.120	.112	.105	.102	.096	.090	.070	.066	.062	.040	.038	.036	.013	.012	.012	
2.0	.107	.094	.083	.092	.081	.072	.063	.056	.050	.036	.033	.029	.012	.011	.010	
3.0	.097	.080	.067	.083	.069	.058	.057	.048	.041	.033	.028	.024	.011	.009	.008	
4.0	.088	.070	.055	.076	.060	.048	.052	.042	.034	.030	.025	.020	.010	.008	.007	
5.0	.081	.061	.046	.070	.053	.040	.048	.037	.028	.028	.022	.017	.009	.007	.006	
6.0	.075	.054	.039	.064	.047	.034	.044	.033	.024	.026	.019	.014	.008	.006	.005	
7.0	.070	.048	.033	.060	.042	.029	.041	.029	.020	.024	.017	.012	.008	.006	.004	
8.0	.065	.043	.028	.056	.038	.025	.039	.026	.018	.023	.016	.010	.007	.005	.003	
9.0	.062	.040	.025	.053	.034	.022	.037	.024	.015	.021	.014	.009	.007	.005	.003	
10.0	.058	.036	.022	.050	.031	.019	.035	.022	.013	.020	.013	.008	.007	.004	.003	

C Range: 0 - 360DEG
C Interval: 30.0DEG
Test Speed: HIGH
Temperature:25.3DEG
Operators:Zoe
Test Date:2020-06-04

g Range: 0 - 180DEG
Interval: 1.0DEG
Test System:EVERFINE GO-SPEX500_V1 SYSTEM V2.00.416
Humidity:65.0%
Test Distance:3.160m [K=1.0000]
Remarks: LAMP:CXB1512-0000-000430G Ra:90
REFLECTOR:AA-022A-M 24R
NOT DRIVER:9V 350mA
30minutes warm-up

UGR(Unified Glare Rating) Table

Test:U:8.6161V I:0.3500A P:3.0156W PF:1.0000 Freq:49.99Hz Lamp Flux:315.32x1 lm										
NAME: 2018.132					TYPE:			WEIGHT:		
SPEC.:3000K					DIM.:			SERIAL No.:2006040203		
MFR.: RISE					SUR.:0.000754385m2			Shielding Angle:		
ceiling/cavity	0.7	0.7	0.5	0.5	0.3	0.7	0.7	0.5	0.5	0.3
walls	0.5	0.3	0.5	0.3	0.3	0.5	0.3	0.5	0.3	0.3
working plane	0.2	0.2	0.2	0.2	0.2	0.2	0.2	0.2	0.2	0.2
Room dimensions	Viewed crosswise					Viewed endwise				
x = 2H y = 2H	7.3	8.0	7.5	8.2	8.3	6.2	6.9	6.4	7.1	7.2
3H	7.2	7.8	7.4	8.0	8.2	6.1	6.7	6.3	6.9	7.1
4H	7.1	7.7	7.3	7.9	8.1	6.0	6.6	6.2	6.8	7.0
6H	7.0	7.6	7.3	7.8	8.1	5.9	6.5	6.2	6.7	6.9
8H	7.0	7.5	7.3	7.8	8.0	5.8	6.4	6.1	6.7	6.9
12H	6.9	7.5	7.2	7.7	8.0	5.8	6.3	6.1	6.6	6.9
4H 2H	7.1	7.7	7.4	7.9	8.1	6.0	6.6	6.2	6.8	7.0
3H	6.9	7.5	7.2	7.7	8.0	5.8	6.3	6.1	6.6	6.9
4H	6.8	7.3	7.2	7.6	7.9	5.7	6.2	6.0	6.5	6.8
6H	6.7	7.2	7.1	7.5	7.8	5.6	6.0	6.0	6.4	6.7
8H	6.7	7.1	7.1	7.4	7.8	5.6	6.0	5.9	6.3	6.7
12H	6.6	7.0	7.0	7.4	7.7	5.5	5.9	5.9	6.2	6.6
8H 4H	6.7	7.1	7.1	7.4	7.8	5.6	6.0	5.9	6.3	6.7
6H	6.6	6.9	7.0	7.3	7.7	5.4	5.8	5.9	6.2	6.6
8H	6.5	6.8	6.9	7.2	7.6	5.4	5.7	5.8	6.1	6.5
12H	6.4	6.7	6.9	7.1	7.6	5.3	5.6	5.8	6.0	6.5
12H 4H	6.6	7.0	7.0	7.4	7.7	5.5	5.9	5.9	6.2	6.6
6H	6.5	6.8	6.9	7.2	7.6	5.4	5.7	5.8	6.1	6.5
8H	6.4	6.7	6.9	7.1	7.6	5.3	5.6	5.8	6.0	6.5
Variations with the observer position at spacings:										
S = 1.0H	+ 3.3 / -16.9					+ 3.4 / -17.2				
1.5H	+ 5.4 / -13.2					+ 5.6 / -13.6				
2.0H	+ 6.3 / -12.5					+ 6.7 / -12.1				

CIE Pub.117, 315.3 lm Total Lamp Luminous Flux Corrected (8log(F/F0) = -4.0)
Area: 0.000754385 m2

C Range: 0 - 360DEG
C Interval: 30.0DEG
Test Speed: HIGH
Temperature:25.3DEG
Operators:Zoe
Test Date:2020-06-04

g Range: 0 - 180DEG
g Interval: 1.0DEG
Test System:EVERFINE GO-SPEX500_V1 SYSTEM V2.00.416
Humidity:65.0%
Test Distance:3.160m [K=1.0000]
Remarks: LAMP:CXB1512-0000-000430G Ra:90
REFLECTOR:AA-022A-M 24R
NOT DRIVER:9V 350mA
30minutes warm-up

UTILIZATION FACTORS TABLE

Test:U:8.6161V I:0.3500A P:3.0156W PF:1.0000 Freq:49.99Hz Lamp Flux:315.32x1 lm		
NAME: 2018.132	TYPE:	WEIGHT:
SPEC.:3000K	DIM.:	SERIAL No.:2006040203
MFR.: RISE	SUR.:0.000754385m2	Shielding Angle:

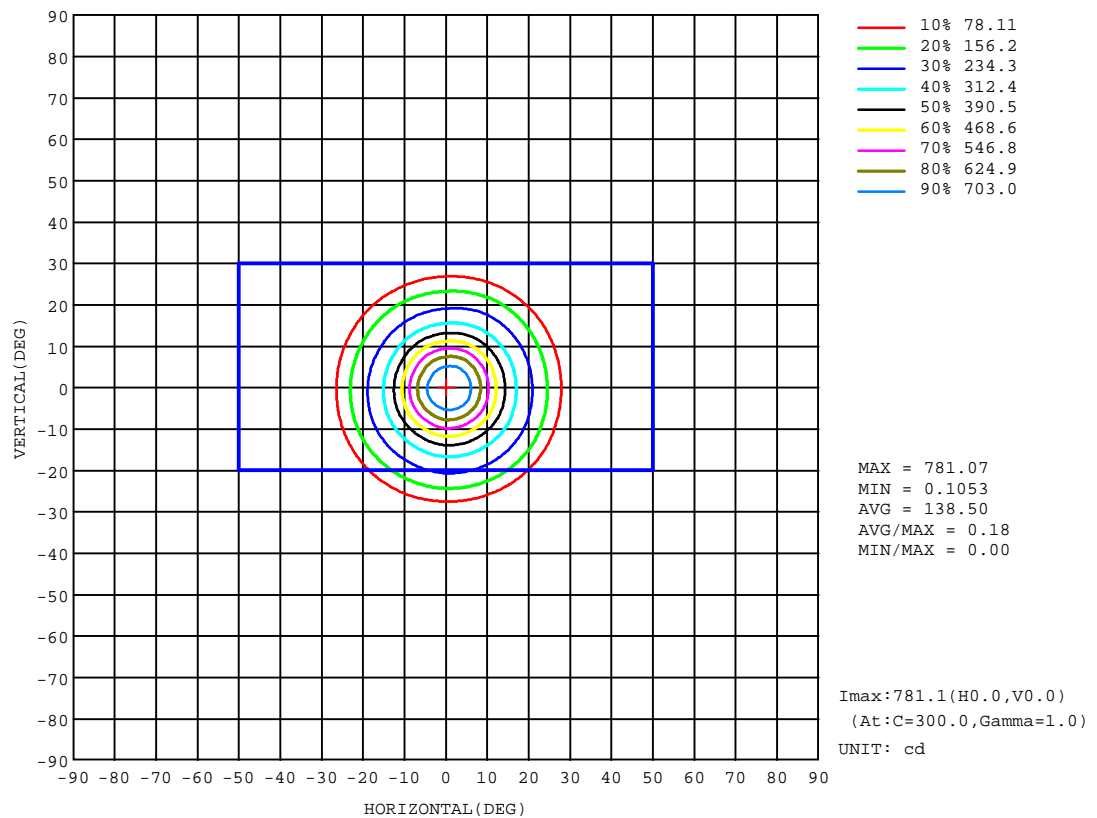
REFLECTANCE										
Ceiling	0.8	0.8	0.8	0.7	0.7	0.7	0.5	0.5	0.5	0
Walls	0.7	0.5	0.3	0.7	0.5	0.3	0.7	0.5	0.3	0
Working plane	0.2	0.2	0.2	0.2	0.2	0.2	0.2	0.2	0.2	0
ROOM INDEX	UTILIZATION FACTORS(PERCENT) $k(RI) \times RCR = 5$									
k = 0.60	65	61	58	64	61	58	64	60	58	56
0.80	70	66	64	69	66	64	68	65	63	61
1.00	72	69	66	72	68	66	71	68	66	63
1.25	75	71	69	74	71	69	73	70	68	66
1.50	76	73	71	76	73	71	74	72	70	67
2.00	78	75	73	77	75	73	75	73	72	68
2.50	79	77	75	78	76	74	76	74	73	69
3.00	80	78	76	79	77	75	76	75	74	69
4.00	81	80	78	80	78	77	77	76	75	70
5.00	82	81	80	81	79	78	78	77	76	71
ROOM INDEX	UF(total)									Direct
According to DIN EN 13032-2 2004			Suspended					SHRNOM = 1.25		

C Range: 0 - 360DEG
C Interval: 30.0DEG
Test Speed: HIGH
Temperature:25.3DEG
Operators:Zoe
Test Date:2020-06-04

g Range: 0 - 180DEG
g Interval: 1.0DEG
Test System:EVERFINE GO-SPEX500_V1 SYSTEM V2.00.416
Humidity:65.0%
Test Distance:3.160m [K=1.0000]
Remarks: LAMP:CXB1512-0000-000430G Ra:90
REFLECTOR:AA-022A-M 24R
NOT DRIVER:9V 350mA
30minutes warm-up

ISOCANDELA DIAGRAM

Test:U:8.6161V I:0.3500A P:3.0156W PF:1.0000 Freq:49.99Hz Lamp Flux:315.32x1 lm		
NAME: 2018.132	TYPE:	WEIGHT:
SPEC.:3000K	DIM.:	SERIAL No.:2006040203
MFR.: RISE	SUR.:0.000754385m2	Shielding Angle:

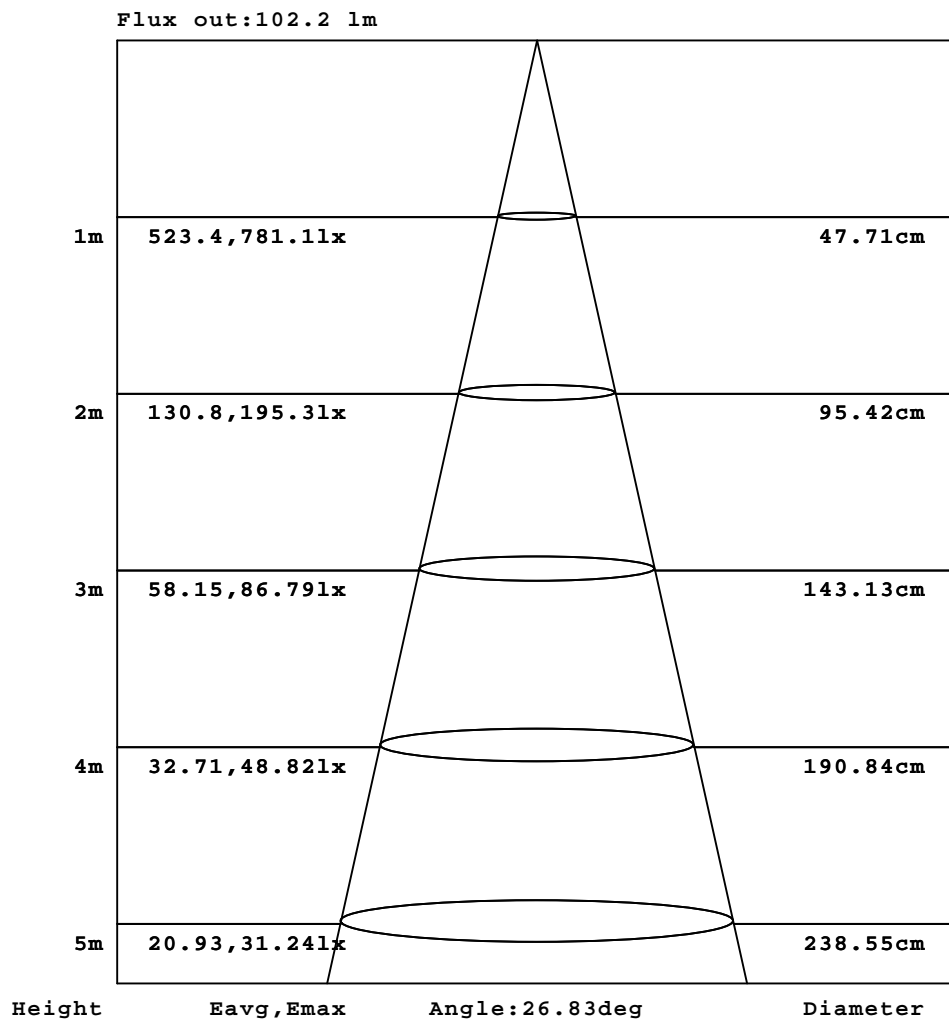


C Range: 0 - 360DEG
C Interval: 30.0DEG
Test Speed: HIGH
Temperature:25.3DEG
Operators:Zoe
Test Date:2020-06-04

g Range: 0 - 180DEG
Interval: 1.0DEG
Test System:EVERFINE GO-SPEX500_V1 SYSTEM V2.00.416
Humidity:65.0%
Test Distance:3.160m [K=1.0000]
Remarks: LAMP:CXB1512-0000-000430G Ra:90
REFLECTOR:AA-022A-M 24R
NOT DRIVER:9V 350mA
30minutes warm-up

AAI Figure

Test:U:8.6161V I:0.3500A P:3.0156W PF:1.0000 Freq:49.99Hz Lamp Flux:315.32x1 lm		
NAME: 2018.132	TYPE:	WEIGHT:
SPEC.:3000K	DIM.:	SERIAL No.:2006040203
MFR.: RISE	SUR.:0.000754385m2	Shielding Angle:



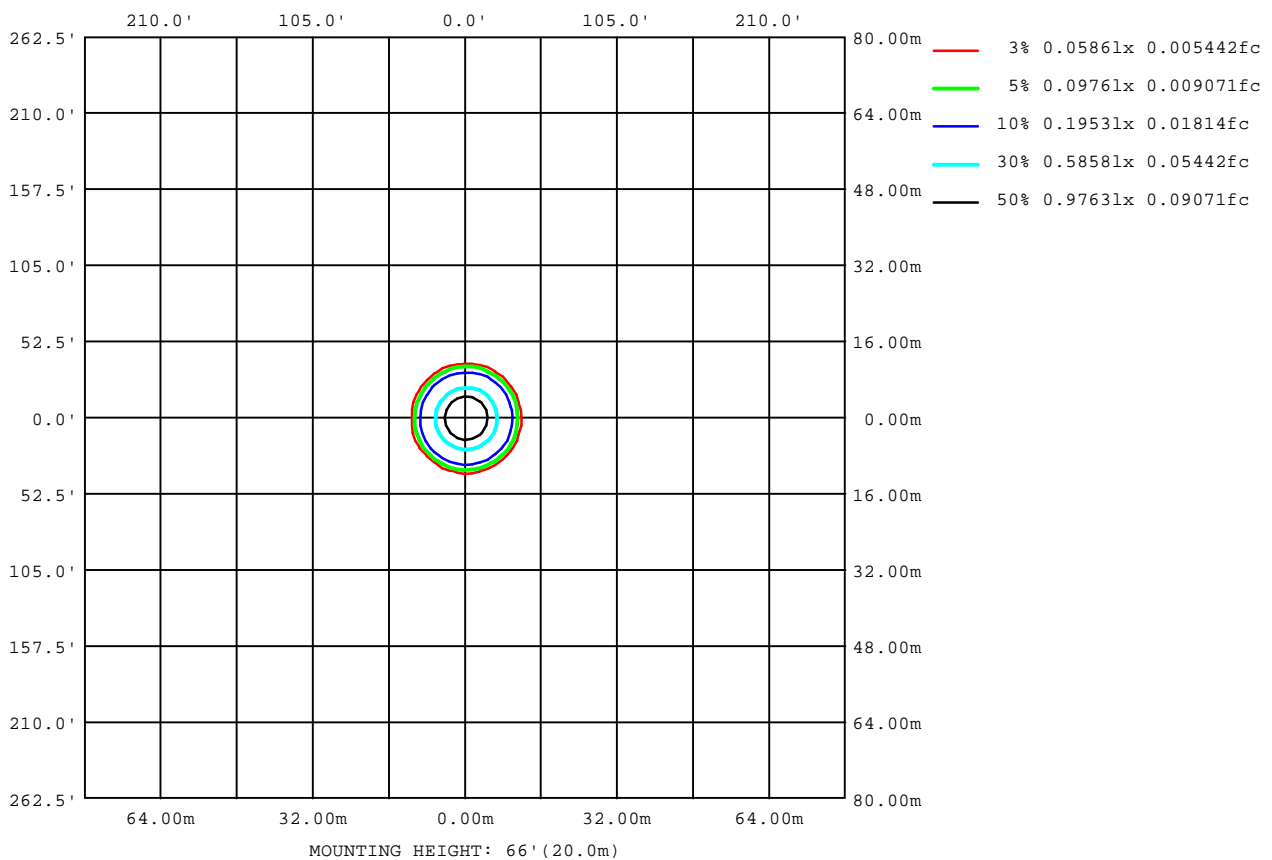
Note: The Curves indicate the illuminated area and the average illumination when the luminaire is at different distance.

C Range: 0 - 360DEG
C Interval: 30.0DEG
Test Speed: HIGH
Temperature: 25.3DEG
Operators: Zoe
Test Date: 2020-06-04

g Range: 0 - 180DEG
Interval: 1.0DEG
Test System: EVERFINE GO-SPEX500_V1 SYSTEM V2.00.416
Humidity: 65.0%
Test Distance: 3.160m [K=1.0000]
Remarks: LAMP: CXB1512-0000-000430G Ra: 90
REFLECTOR: AA-022A-M 24R
NOT DRIVER: 9V 350mA
30minutes warm-up

ISOLUX DIAGRAM

Test:U:8.6161V I:0.3500A P:3.0156W PF:1.0000 Freq:49.99Hz Lamp Flux:315.32x1 lm		
NAME: 2018.132	TYPE:	WEIGHT:
SPEC.:3000K	DIM.:	SERIAL No.:2006040203
MFR.: RISE	SUR.:0.000754385m2	Shielding Angle:



C Range: 0 - 360DEG
C Interval: 30.0DEG
Test Speed: HIGH
Temperature:25.3DEG
Operators:Zoe
Test Date:2020-06-04

g Range: 0 - 180DEG
g Interval: 1.0DEG
Test System:EVERFINE GO-SPEX500_V1 SYSTEM V2.00.416
Humidity:65.0%
Test Distance:3.160m [K=1.0000]
Remarks: LAMP:CXB1512-0000-000430G Ra:90
REFLECTOR:AA-022A-M 24R
NOT DRIVER:9V 350mA
30minutes warm-up

LED Avg.L Report

Test:U:8.6161V I:0.3500A P:3.0156W PF:1.0000 Freq:49.99Hz Lamp Flux:315.32x1 lm		
NAME: 2018.132	TYPE:	WEIGHT:
SPEC.:3000K	DIM.:	SERIAL No.:2006040203
MFR.: RISE	SUR.:0.000754385m2	Shielding Angle:

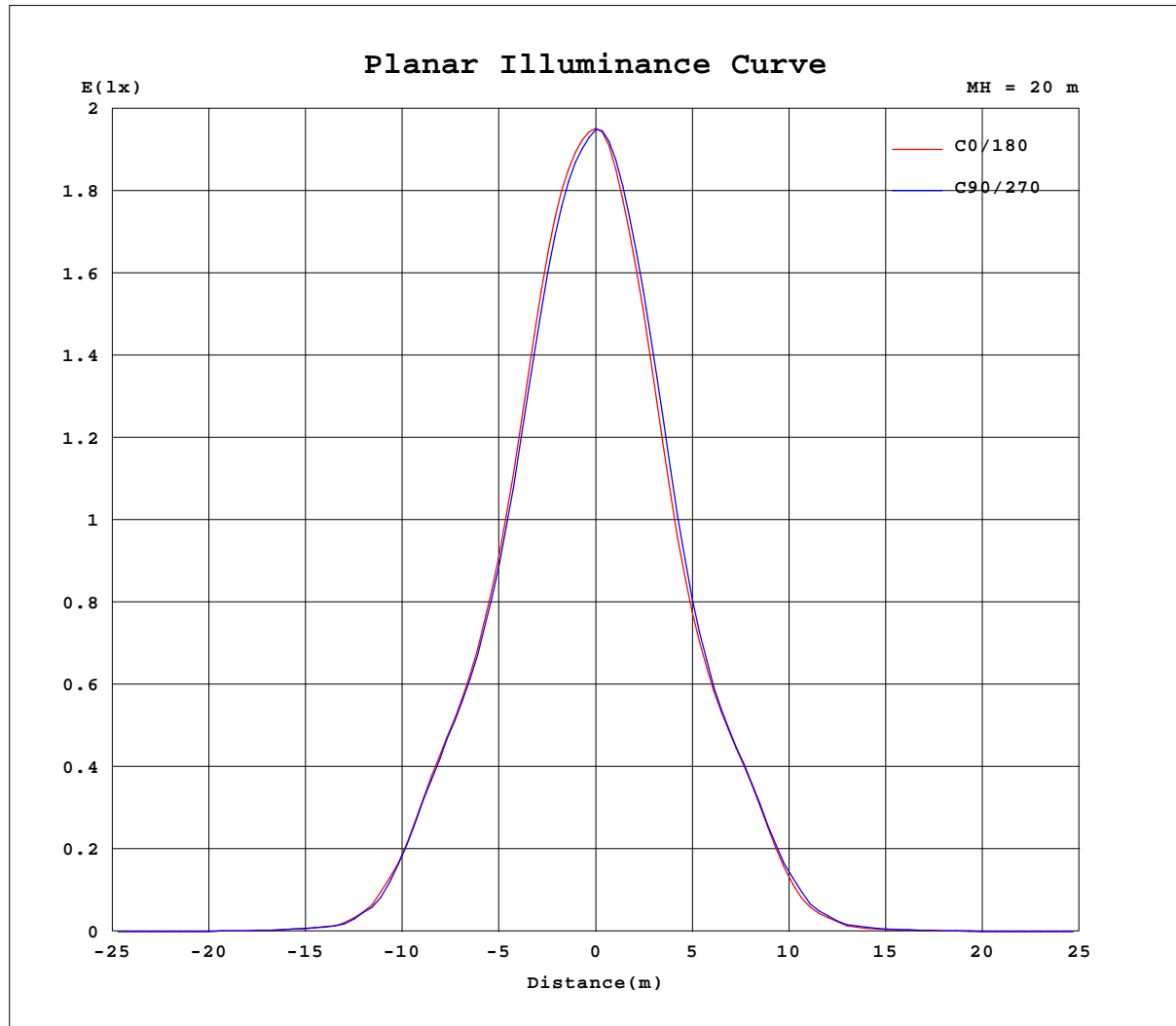
AvgL	cd/m2
L_0~180(65)av	120
L_0~180(75)av	53
L_0~180(85)av	0
L_90~270(65)av	120
L_90~270(75)av	44
L_90~270(85)av	7
L_45(65)av	121
L_45(75)av	47
L_45(85)av	0

Standard: GB/T 29293-2012

C Range: 0 - 360DEG
C Interval: 30.0DEG
Test Speed: HIGH
Temperature:25.3DEG
Operators:Zoe
Test Date:2020-06-04

g Range: 0 - 180DEG
Interval: 1.0DEG
Test System:EVERFINE GO-SPEX500_V1 SYSTEM V2.00.416
Humidity:65.0%
Test Distance:3.160m [K=1.0000]
Remarks: LAMP:CXB1512-0000-000430G Ra:90
REFLECTOR:AA-022A-M 24R
NOT DRIVER:9V 350mA
30minutes warm-up

Planar Illuminance Curve



C Range: 0 - 360DEG
 C Interval: 30.0DEG
 Test Speed: HIGH
 Temperature: 25.3DEG
 Operators: Zoe
 Test Date: 2020-06-04

Beam Range: 0 - 180DEG
 Beam Interval: 1.0DEG
 Test System: EVERFINE GO-SPEX500_V1 SYSTEM V2.00.416
 Humidity: 65.0%
 Test Distance: 3.160m [K=1.0000]
 Remarks: LAMP: CXB1512-0000-000430G Ra: 90
 REFLECTOR: AA-022A-M 24R
 NOT DRIVER: 9V 350mA
 30minutes warm-up

LUMINOUS DISTRIBUTION INTENSITY DATA

Test:U:8.6161V I:0.3500A P:3.0156W PF:1.0000 Freq:49.99Hz Lamp Flux:315.32x1 lm		
NAME: 2018.132	TYPE:	WEIGHT:
SPEC.:3000K	DIM.:	SERIAL No.:2006040203
MFR.: RISE	SUR.:0.000754385m2	Shielding Angle:

Table--1

UNIT: cd

C(°) g (°)	0	30	60	90	120	150	180	210	240	270	300	330						
0	780	780	780	780	780	780	780	780	780	780	780	780						
5	727	732	726	713	702	696	686	681	690	703	721	726						
10	559	564	554	543	520	507	490	484	502	518	544	554						
15	368	376	369	360	340	328	313	306	313	324	350	362						
20	250	258	254	248	235	227	214	206	209	217	237	245						
25	144	153	149	142	129	120	109	100	107	113	132	138						
30	40.5	43.0	43.6	36.9	31.6	30.2	27.6	26.6	28.7	30.8	35.8	38.2						
35	8.81	8.55	8.89	8.04	8.12	7.05	6.37	6.15	6.55	8.06	7.73	8.30						
40	3.76	3.97	3.94	4.01	3.65	3.27	2.94	2.86	3.13	3.46	3.60	3.59						
45	1.45	1.50	1.45	1.49	1.37	1.31	1.22	1.20	1.27	1.40	1.43	1.38						
50	0.68	0.66	0.61	0.62	0.67	0.72	0.71	0.71	0.71	0.71	0.73	0.70						
55	0.23	0.24	0.22	0.20	0.21	0.18	0.14	0.13	0.14	0.14	0.18	0.20						
60	0.07	0.07	0.07	0.07	0.07	0.07	0.07	0.07	0.07	0.07	0.07	0.07						
65	0.04	0.03	0.04	0.04	0.04	0.04	0.04	0.04	0.04	0.04	0.04	0.04						
70	0.02	0.02	0.02	0.02	0.02	0.02	0.02	0.02	0.02	0.02	0.02	0.02						
75	0.01	0.01	0.01	0.01	0.01	0.01	0.01	0.01	0.01	0.01	0.01	0.01						
80	0.00	0.00	0.00	0.00	0.00	0.01	0.00	0.00	0.00	0.00	0.00	0.00						
85	0.00	0.00	0.00	0.00	0.00	0.00	0.00	0.00	0.00	0.00	0.00	0.00						
90	0.00	0.00	0.00	0.00	0.00	0.00	0.00	0.00	0.00	0.00	0.00	0.00						
95	0.00	0.00	0.00	0.00	0.00	0.00	0.00	0.00	0.00	0.00	0.00	0.00						
100	0.00	0.00	0.00	0.00	0.00	0.00	0.00	0.00	0.00	0.00	0.00	0.00						
105	0.00	0.00	0.00	0.00	0.00	0.00	0.00	0.00	0.00	0.00	0.00	0.00						
110	0.00	0.00	0.00	0.00	0.00	0.00	0.00	0.00	0.00	0.00	0.00	0.00						
115	0.00	0.00	0.00	0.00	0.00	0.00	0.00	0.00	0.00	0.00	0.00	0.00						
120	0.00	0.00	0.00	0.00	0.00	0.00	0.00	0.00	0.00	0.00	0.00	0.00						
125	0.00	0.00	0.00	0.00	0.00	0.00	0.00	0.00	0.00	0.00	0.00	0.00						
130	0.00	0.00	0.00	0.00	0.00	0.00	0.00	0.00	0.00	0.00	0.00	0.00						
135	0.00	0.00	0.00	0.00	0.00	0.00	0.00	0.00	0.00	0.00	0.00	0.00						
140	0.00	0.00	0.00	0.00	0.00	0.00	0.00	0.00	0.00	0.00	0.00	0.00						
145	0.00	0.00	0.00	0.00	0.00	0.00	0.00	0.00	0.00	0.00	0.00	0.00						
150	0.00	0.00	0.00	0.00	0.00	0.00	0.00	0.00	0.00	0.00	0.00	0.00						
155	0.00	0.00	0.00	0.00	0.00	0.00	0.00	0.00	0.00	0.00	0.00	0.00						
160	0.00	0.00	0.00	0.00	0.00	0.00	0.00	0.00	0.00	0.00	0.00	0.00						
165	0.00	0.00	0.00	0.00	0.00	0.00	0.00	0.00	0.00	0.00	0.00	0.00						
170	0.00	0.00	0.00	0.00	0.00	0.00	0.00	0.00	0.00	0.00	0.00	0.00						
175	0.00	0.00	0.00	0.00	0.00	0.00	0.00	0.00	0.00	0.00	0.00	0.00						
180	0.00	0.00	0.00	0.00	0.00	0.00	0.00	0.00	0.00	0.00	0.00	0.00						

C Range: 0 - 360DEG
C Interval: 30.0DEG
Test Speed: HIGH
Temperature:25.3DEG
Operators:Zoe
Test Date:2020-06-04

g Range: 0 - 180DEG
g Interval: 1.0DEG
Test System:EVERFINE GO-SPEX500_V1 SYSTEM V2.00.416
Humidity:65.0%
Test Distance:3.160m [K=1.0000]
Remarks: LAMP:CXB1512-0000-000430G Ra:90
REFLECTOR:AA-022A-M 24R
NOT DRIVER:9V 350mA
30minutes warm-up